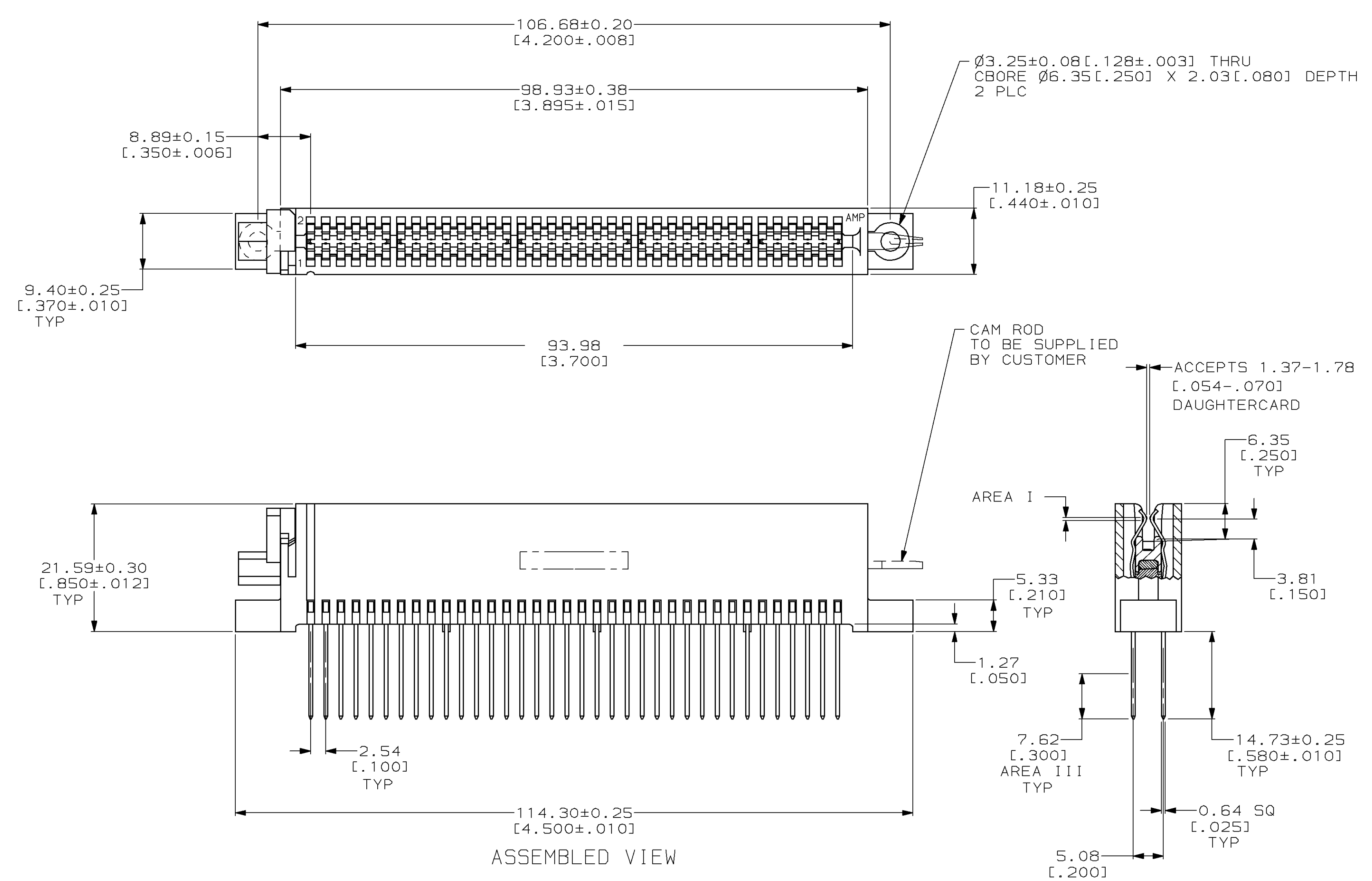
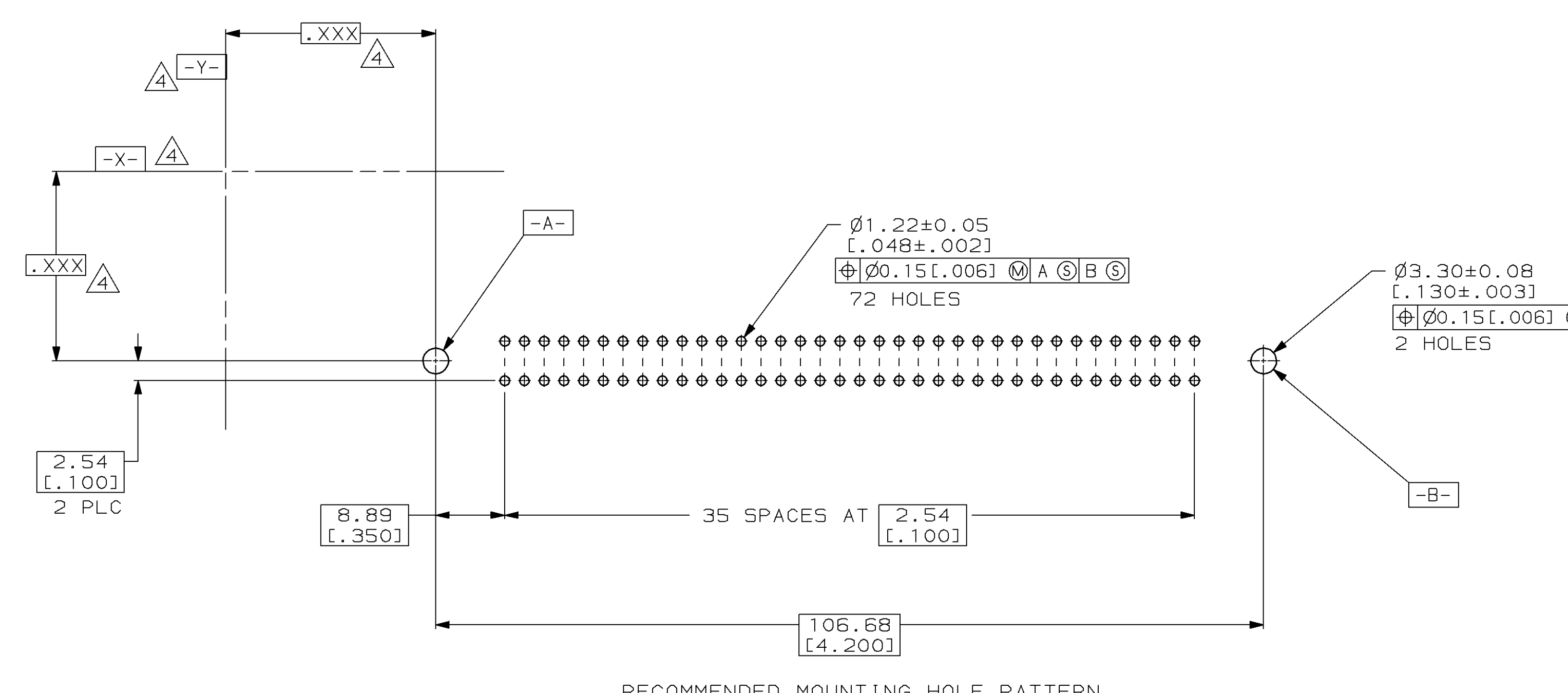
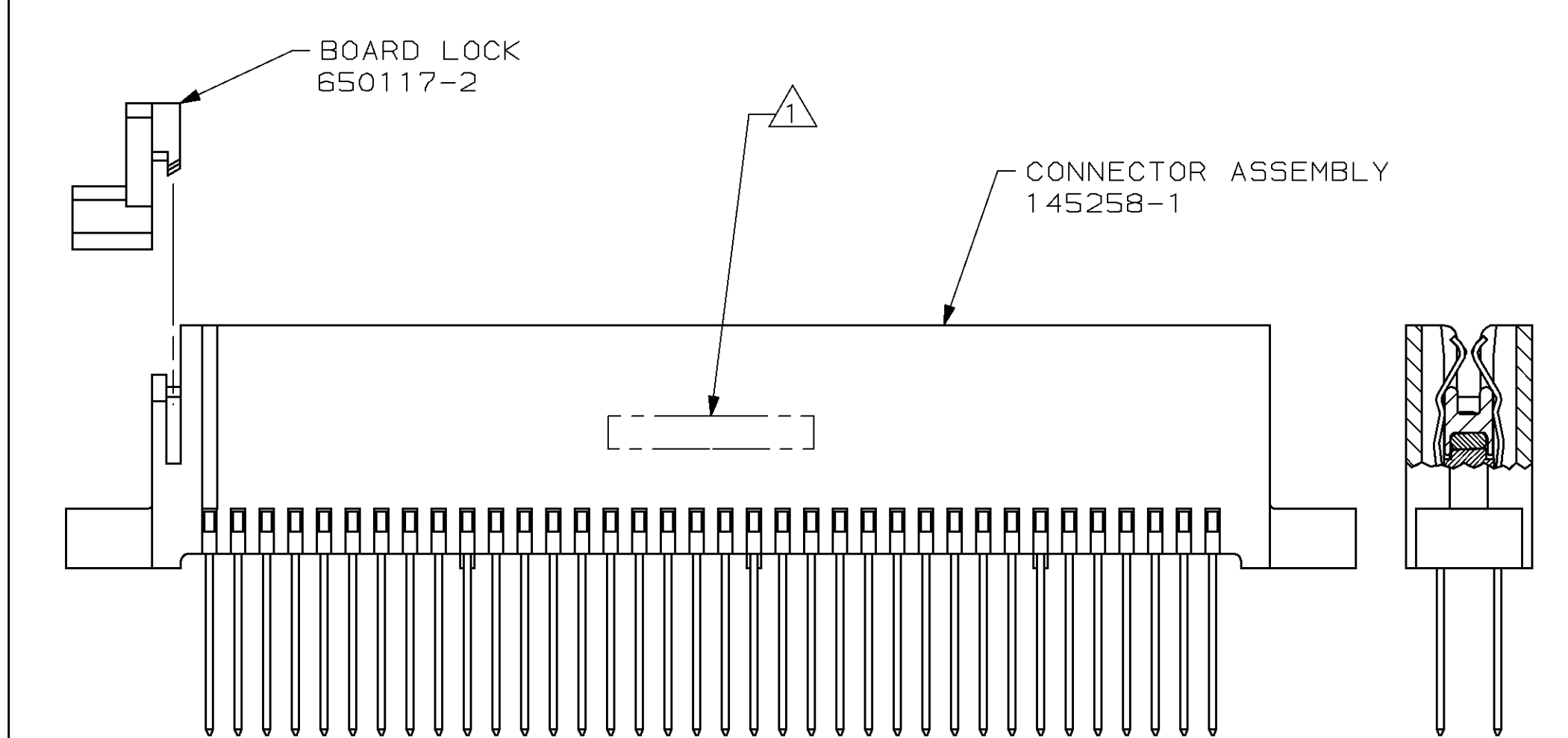


| LOC |    | DIST |      | REVISIONS                  |           |     |      |  |
|-----|----|------|------|----------------------------|-----------|-----|------|--|
| FT  | 22 | P    | LTR  | DESCRIPTION                | DATE      | DMN | APVD |  |
|     |    | 0    | RLSE | PER NPR 64 WAS 97-S241-2-1 | 22 OCT 97 | -   | -    |  |
|     |    | A    | REV  | PER EC 0652-23-98          | 18 MAY 98 | CO  | DW   |  |
|     |    | C    | REV  | PER EC 0320-373-97         | 03 JUN 98 | DH  | HR   |  |



- 1 APPROXIMATE LOCATION OF PART NUMBER AND DATE CODE, EITHER SIDE.
- 2 CONNECTOR ASSEMBLY:  
HOUSING: POLYESTER, BLACK.  
CONTACT: PHOSPHOR BRONZE.  
CAM INSERT: POLYPHENYLENE SULFIDE, NATURAL.  
BOARD LOCK: POLYESTER, BLACK.
- 3 CONTACT: AREA I 1.27µm [.000050] MIN GOLD, AREA III 0.76 [.000030] MIN GOLD OVER 1.27µm [.000050] MIN NICKEL.
- 4 DATUMS AND BASIC DIMENSIONS TO BE ESTABLISHED BY CUSTOMER.



145293-1  
 PART NUMBER

|  |  |                          |  |
|--|--|--------------------------|--|
| THIS DRAWING IS A CONTROLLED DOCUMENT.                                     |  | DMN C. OBERMAN 22 OCT 97 | AMP Incorporated<br>Harrisburg, PA 17105-3508  |
| DIMENSIONS: mm (INCHES)  |  | CHK R. STONE 24 OCT 97   |  |
| TOLERANCES UNLESS OTHERWISE SPECIFIED:                                     |  | APVD D. WIKI 17 MAY 98   | NAME: CONNECTOR KIT, UNASSEMBLED,<br>2.54 [.100] X 5.08 [.200] Ø, 36 DUAL POSN,<br>108-9048<br>0.64 [.025] SQ POST, 0-C ROTARY ZIF |
| 0 PLC ±<br>1 PLC ±<br>2 PLC ±0.13 (.005)<br>3 PLC ±<br>4 PLC ±<br>ANGLES ± |  | PRODUCT SPEC 108-9048    |  |
| MATERIAL   |  | WEIGHT                   | SIZE CAGE CODE DRAWING NO. RESTRICTED TO   |
| FINISH   |  | A1 00779                 | 145293   |
|  |  | CUSTOMER DRAWING         | SCALE 2:1 SHEET 1 OF 1 REV C   |